

offer 1937
city Dresden
land area 285
living area 165
industrial real estate 0
useful area 40
apartments 1
year of construction 1994
price, € 247 000
characterisation row house



offer	2011
city	Dresden
land area, m ²	950
living area, m ²	230
industrial real estate, m ²	50
useful area, m ²	118
apartments	2
year of construction	1997
price, €	504 000
characterisation	semidetached house



offer 2032
city Dresden
land area, m² 580
living area, m² 190
industrial real estate, m² 0
useful area, m² 10
apartments 1
year of construction 1993
price, € 247 000
characterisation single occupancy house



offer 951
city Medingen, near of Dresden
land area, m² 1640
living area, m² 220
industrial real estate, m² 0
useful area, m² 21
apartments 1
year of construction 1994
price, € 560 000
characterisation single occupancy house



offer 1812
city Dresden
land area, m² 650
living area, m² 580
industrial real estate, m² 0
useful area, m² 150
apartments 11
year of construction 1900
redeveloped 2001
price, € 555 000
characterisation apartment building



offer	2078
city	Dresden
land area, m ²	455
living area, m ²	696
industrial real estate, m ²	247
useful area, m ²	0
apartments	11
year of construction	1995
price, €	661 000
characterisation	apartment building
rental per annum	~ 50 000€



offer 1390
city Dresden
land area, m² 920
living area, m² 515
industrial real estate, m² 198
useful area, m² 145
apartments 10
year of construction 1897
redeveloped 1994
price, € 616000
characterisation apartment building, monument
rental per annum ~ 45 000€

offer 1813
city Dresden
land area, m² 654
living area, m² 453
industrial real estate, m² 153
useful area, m² 150
apartments 10
year of construction ~ 1900
redeveloped 1996
price, € 812000
characterisation apartment building
rental per annum ~ 58 000€

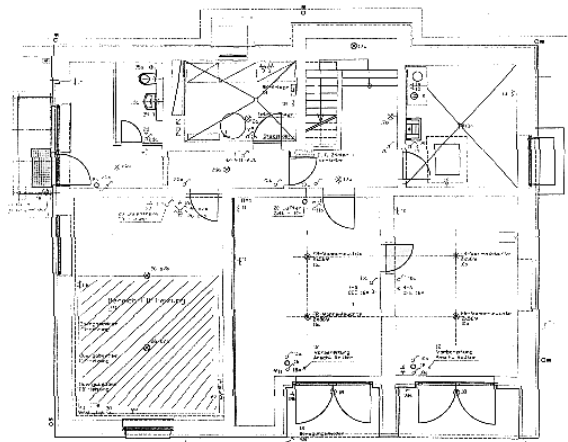
offer 2046
city Dresden
land area, m² 1180
living area, m² 944
industrial real estate, m² 119
useful area, m² 50
apartments 13
year of construction ~ 1890
redeveloped ~ 1996
price, € 1 087 000
characterisation apartment building, monument
rental per annum ~ 69 000€

offer 1775
city Dresden
land area, m² 1293
living area, m² 210
industrial real estate, m² 50
useful area, m² 0
apartments 2
year of construction 1901
redeveloped 2000
price, € 460 000
characterisation Villa



offer	2084
city	Dresden
land area, m ²	750
living area, m ²	280
industrial real estate, m ²	100
useful area, m ²	20
apartments	4
year of construction	1899
partial redeveloped	
price, €	661 000
characterisation	Villa

offer 3200
city Dresden
land area, m² 1300
living area, m² 244
industrial real estate, m² 0
useful area, m² ~ 56
apartments 1
year of construction 2001
price, € 840 000
characterisation Villa



offer 3201
city Dresden
land area, m² 290
living area, m² 105
apartments 1
year of construction ?
redeveloped last years
price, € 218 400
characterisation single occupancy house



offer 3202
city Dresden
land area, m² ~ 170
living area, m² 156
apartments 1
year of construction 1900
redeveloped last years
price, € 340 704
characterisation single occupancy house



offer 3203
city Dresden
land area, m² 1947
living area, m² 191
year of construction 1994
price, € 392 000
characterisation single occupancy house



offer	3204
city	Dresden
land area, m ²	~ 170
living area, m ²	150
industrial real estate, m ²	50
apartments	1
year of construction	old
redeveloped	1999
price, €	280 000
characterisation	Farmhouse

offer 3205
city Dresden
land area, m² ~ 180
living area, m² 90
industrial real estate, m² 0
apartments 1
year of construction 1900
redeveloped last years
price, € 200 480
characterisation Gardenhouse



offer 3206
city Dresden
land area, m² ?
living area, m² 330
industrial real estate, m² 0
useful area, m² ?
apartments 1
year of construction 1850
redeveloped last years
price, € 545 000
characterisation Villa with offices



offer 3207
city Dresden
land area, m² 970
living area, m² 120
price, € 239 000
characterisation single occupancy house

offer 3208
city Dresden
land area, m² ?
living area, m² 130
year of construction 1994
price, € 340 704
characterisation house

offer 3209
city Dresden
land area, m² 450
living area, m² 175
useful area, m² 113
year of construction 1997
redeveloped last years
price, € 280 000
characterisation single occupancy house

offer 3210
city Dresden
land area, m² 537
living area, m² 165
year of construction 1993
price, € 386 400
characterisation single occupancy house

offer 3211
city Dresden
land area, m² 590
living area, m² 108
price, € 257 600
characterisation single occupancy house